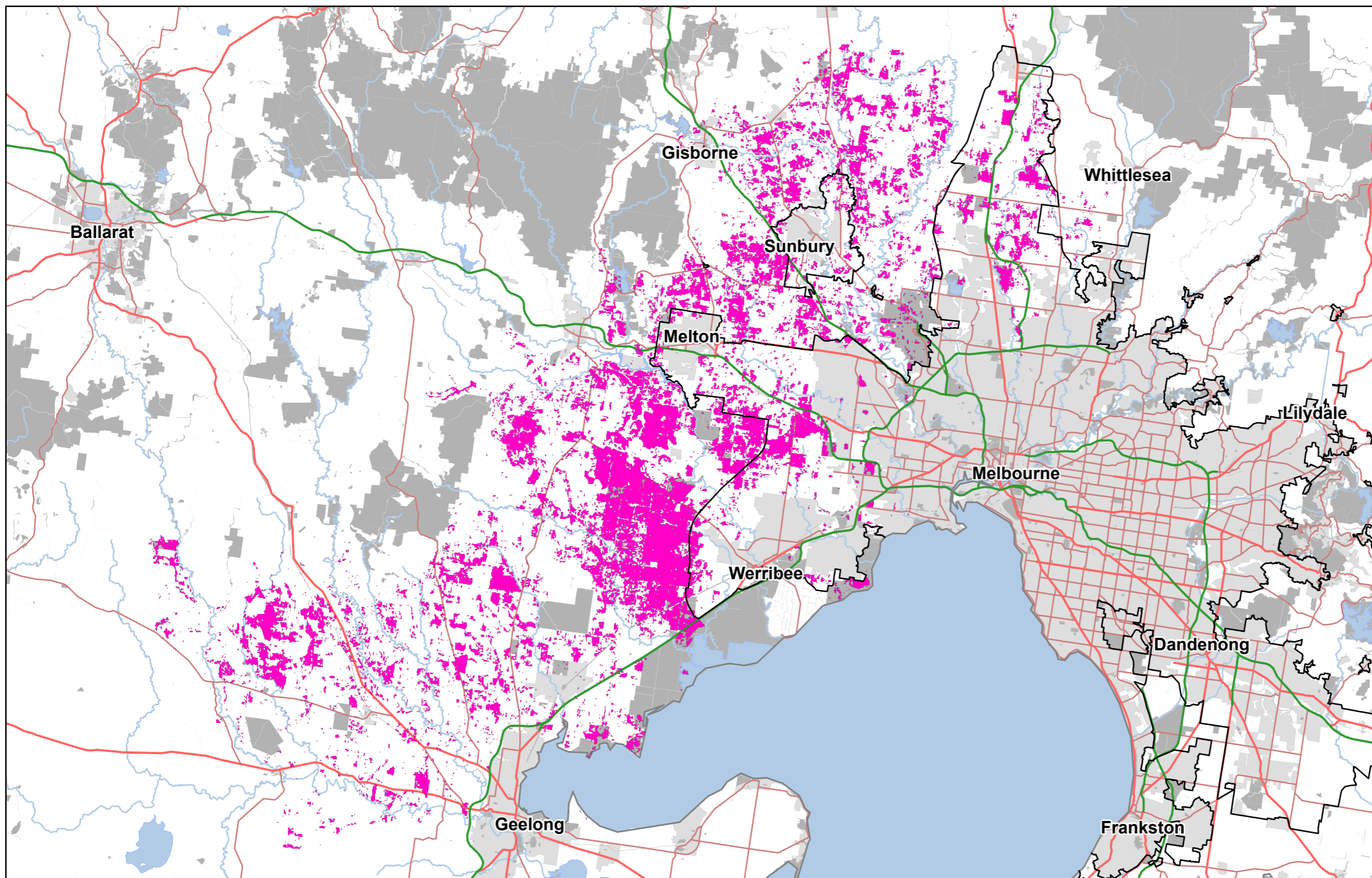
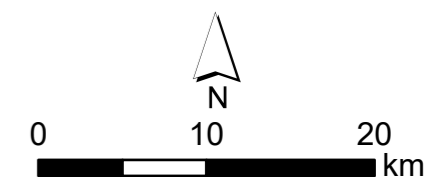


# Victorian Grassland Earless Dragon (*Tympanocryptis pinguicolla*) Habitat Distribution Model



- Legend**
- VGED modelled habitat
  - Built up area
  - Public Land
  - Urban Growth Boundary



**Produced by:** Biodiversity Policy and Strategy Branch, Biodiversity Division

**Produced:** Monday, 17 June 2024

**Spatial Reference:** Name: GDA2020 Vicgrid, PCS: GDA2020 Vicgrid, GCS: GDA2020, Datum: GDA2020, Projection: Lambert Conformal Conic

**Copyright**  
© The State of Victoria Department of Energy, Environment and Climate Action, 2024  
This work is licensed under a Creative Commons Attribution 4.0 International licence. For further information in relation to the Department's copyright and creative commons refer to [www.deeca.vic.gov.au/copyright](http://www.deeca.vic.gov.au/copyright).

**Disclaimer:** This publication may be of assistance to you but the State of Victoria and its employees do not guarantee that the publication is without flaw of any kind or is wholly appropriate for your particular purposes and therefore disclaims all liability for any error, loss or other consequence which may arise from you relying on any information in this publication.  
For further information about the Department's disclaimer refer to [www.deeca.vic.gov.au/disclaimer](http://www.deeca.vic.gov.au/disclaimer).

**Accessibility**  
If you would like to receive this publication in an alternative format, please contact our Customer Service Centre on 136 186 or email [customer.service@deeca.vic.gov.au](mailto:customer.service@deeca.vic.gov.au).  
Alternatively contact the National Relay Service on 133 677 or [www.relayservice.com.au](http://www.relayservice.com.au).

We acknowledge and respect Victorian Traditional Owners as the original custodians of Victoria's land and waters, their unique ability to care for Country and deep spiritual connection to it. We honour Elders past and present whose knowledge and wisdom has ensured the continuation of culture and traditional practices.